



Hillfield Court NW3

Parkheath
Sold on Service





Hillfield Court, NW3

Asking Price

£1,175,000, Share of Freehold

Camden Band F

- A stunning 3 double bedroom, 2 bathroom apartment
- Excellent decorative order and well proportioned
- Set in this highly regarded 1930`s mansion block
- Magnificent 25ft living and dining area
- 19ft bay fronted main bedroom
- Over 1250 sqft of lateral space on the 3rd floor
- 2 further double bedrooms (one with ensuite)
- Communal gardens, lift and portorage
- Share of freehold
- Situated moments from all Belsize Park amenities



Belsize Park
208 Haverstock Hill
NW3 2AG
Sales 020 7431 1234
Lettings 020 7431 3104
nw3@parkheath.com

South Hampstead
8a Canfield Gardens
NW6 3BS
Sales 020 7625 4567
Lettings 020 7644 0800
nw6@parkheath.com

West Hampstead
192 West End Lane
NW6 1SG
Sales & Lettings
Tel 020 7794 7111
192@parkheath.com

Kentish Town
148 Kentish Town Rd
NW1 9QB
Tel 020 7485 0400
kt@parkheath.com

Kensal Rise
54-56 Chamberlayne Rd
NW10 3JH
Tel 020 8960 4845
kensal@parkheath.com

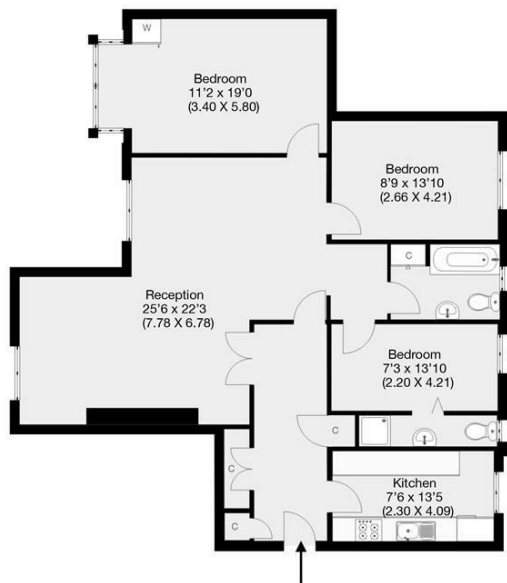
Property Management
148 Kentish Town Rd
NW1 9QB
020 7433 6174
pm@parkheath.com

Parkheath
Sold on Service



Hillfield Court, London, NW3

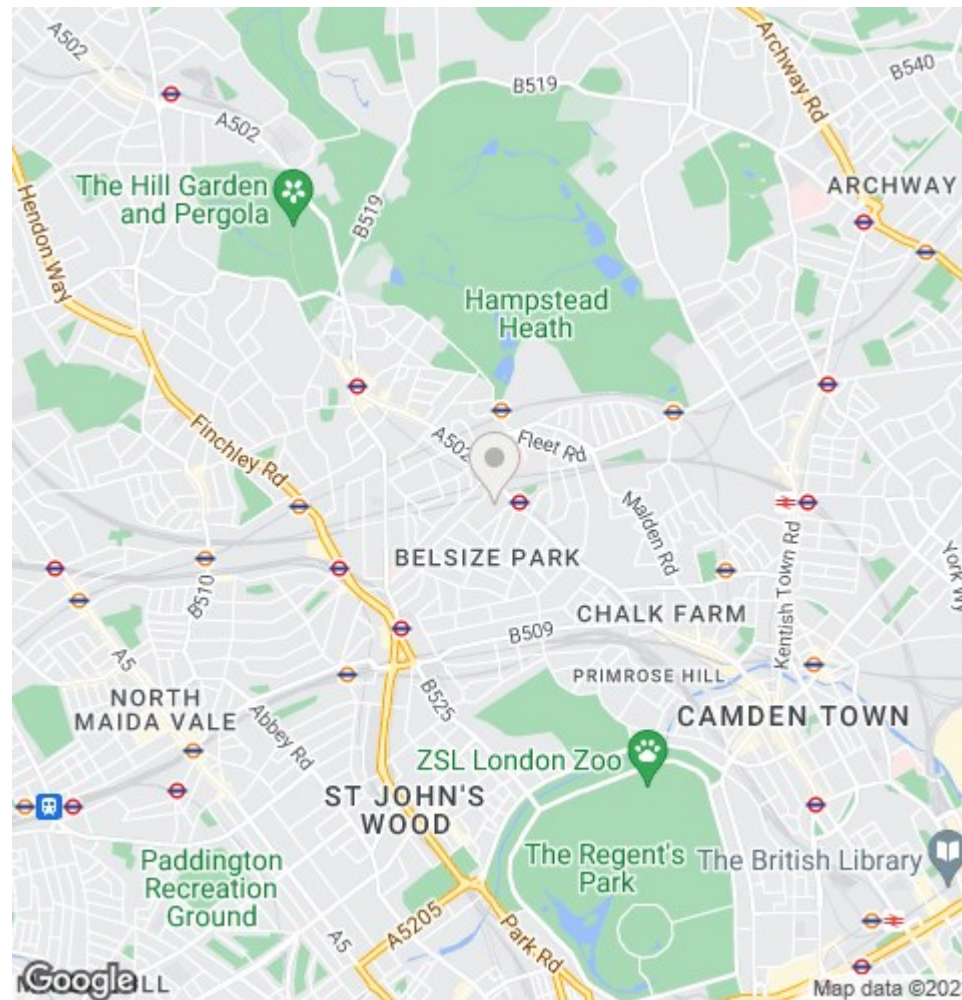
Approximate Gross Internal Area 117 sqm / 1259 sqft



Third Floor

THIS FLOOR PLAN IS PRODUCED FOR PARKHEATH SUBMITTED BY ARCHIMEDIA web: www.archi-media.co.uk

Whilst every attempt has been made to ensure the accuracy of the floor plan contained here, measurements of doors, windows and rooms are approximate and no responsibility is taken for any error, omission or misstatement. These plans are for representation purposes only and should be used as such by any prospective buyer or tenant. Specifically no guarantee is given on the gross internal floor area of the property if quoted on this plan and any figures given is initial guidance only and should be treated as such.



The particulars do not constitute part of an offer or contract. The particulars, including text, photographs and plans, are for the guidance only of prospective purchasers/tenants and must not be relied upon as statements of fact. The descriptions provided therein represent the opinion of the author and whilst given in good faith should not be construed as statements of fact. Nothing in these particulars shall be deemed a statement that the property is in good condition or otherwise or that any services or facilities are in good working order. All measurements are approximate